

# **Seating System Armrests IPB, International**

This Illustrated Parts Breakdown (IPB) Catalog has been compiled from the latest product information available at the time of publication. Quantum Rehab® / Pride Mobility Products® Corporation reserves the right to make changes and updates to this manual and to the product(s) it represents. Any changes, updates, or improvements to the product(s) may result in slight differences between this manual and the product that has been purchased.

An IPB is a graphically portrayed parts listing of product components which have been deemed to have serviceable, maintenance significance. When applicable, IPBs utilize “exploded” illustrations that detail serviceable components and a corresponding itemized parts list of reference numbers, part numbers, descriptions, quantities, and any applicable pricing. Most product components are incorporated into assemblies and may not be available for replacement.

Serviceable components will be noted by a callout in the illustration that will correspond to a alphanumeric reference number in the parts list. Items may also be listed in the parts list by parent assemblies. In most cases when a parent assembly is listed, there will be child parts or sub-assemblies listed under that parent.

For example: The parent assembly reference number is A1 — A5. That part contains all of the items listed as and contained within A1, A2, A3, A4, & A5. As long as these subcomponents have a callout associated with them, they can be selected for replacement or quote.

Updates to the contents of an IPB will be made on a regular basis based upon applicable product changes and enhancements. This PDF catalog has been export from the Provider based service site. The most up to date parts look up tool and ordering application is located at: [prideprovider.com](http://prideprovider.com). Please utilize this system to enhance your user experience. It is built with highly interactive materials that are set with relational properties that will facilitate easier part look-up, more accurate parts selection, notification of onhand part availability, and quick links to related documents and products.

We welcome all questions and comments regarding the Quantum Rehab® / Pride Mobility Products® Corporation IPB systems.

Any pricing that is included in Quantum Rehab® /Pride Mobility Products® Corporation IPBs is subject to change without prior notice.

Thank you for choosing products from Quantum Rehab® and Pride Mobility Products® Corporation.



2.3. Quick Height Adjustable Armrests

Desk Length, Single Post, Height Adjustable Armrest, Synergy/TB2 ..... 1

Full Length, Single Post, Height Adjustable Armrest, Synergy/TB2 ..... 3

Pediatric Quick Release (Single Post) L&R, Synergy & TB2 .....5

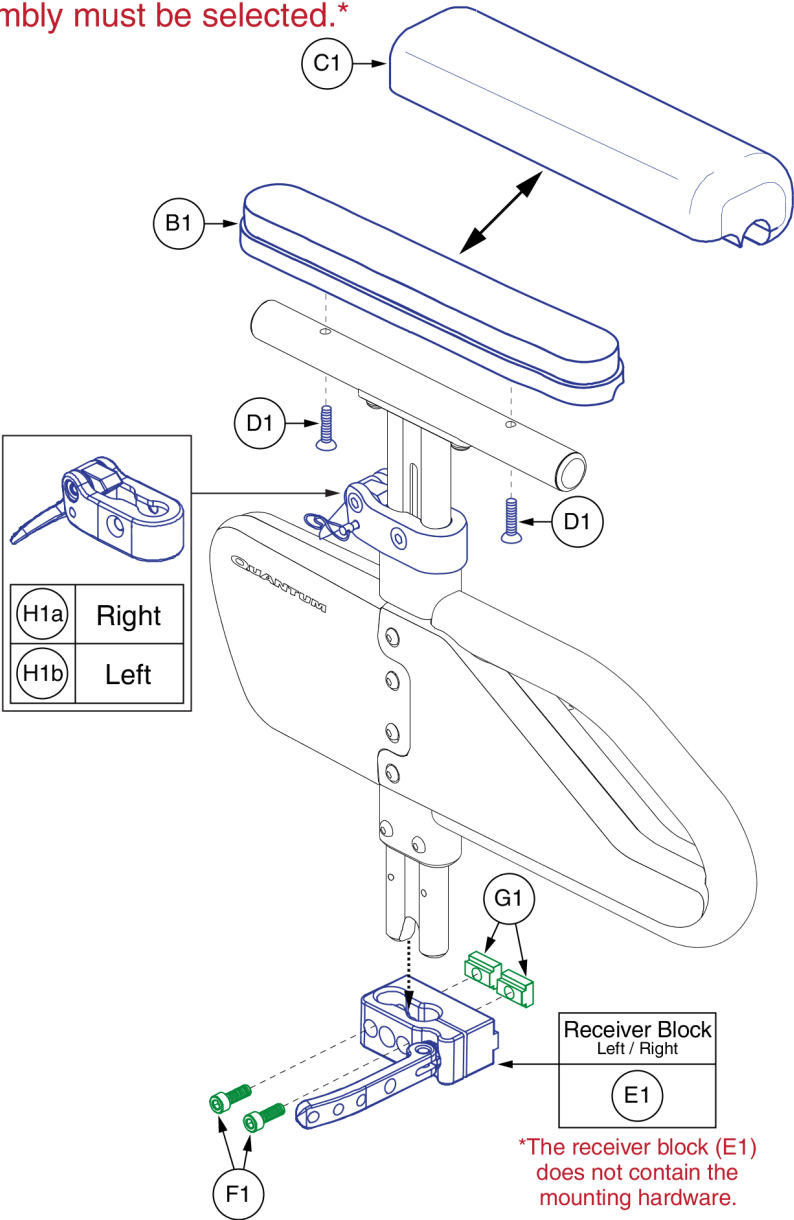
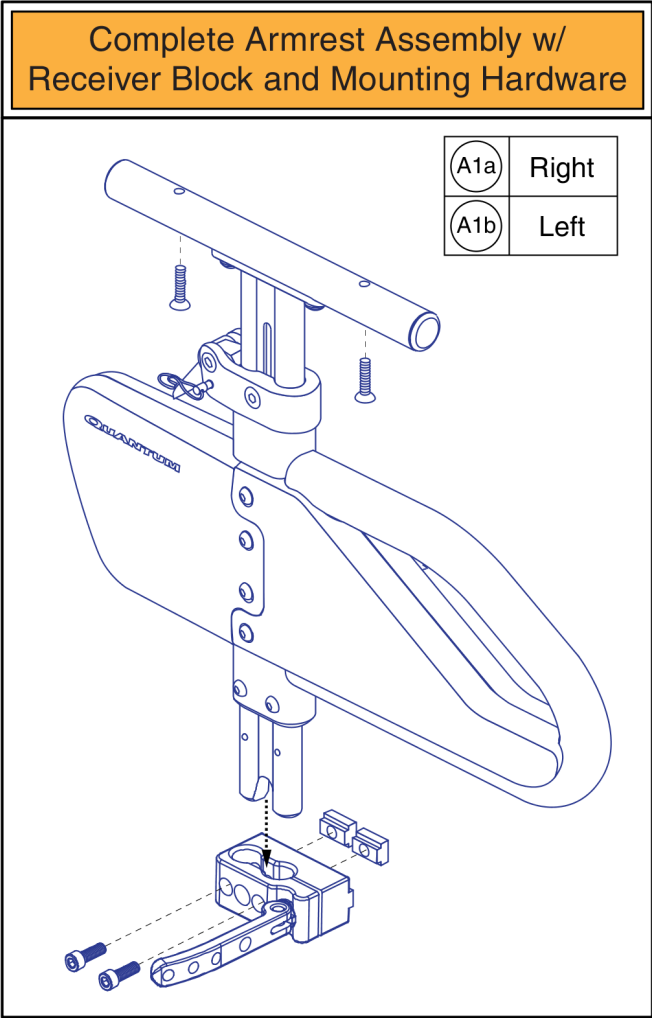
Pediatric Quick Release (Single Post) Shroud ..... 7

Appendix A:Pages Index .....9

Appendix B:Parts Index .....10

2.3. Quick Height Adjustable Armrests

\*Only serviceable components contain callouts. For components without callouts the complete assembly must be selected.\*

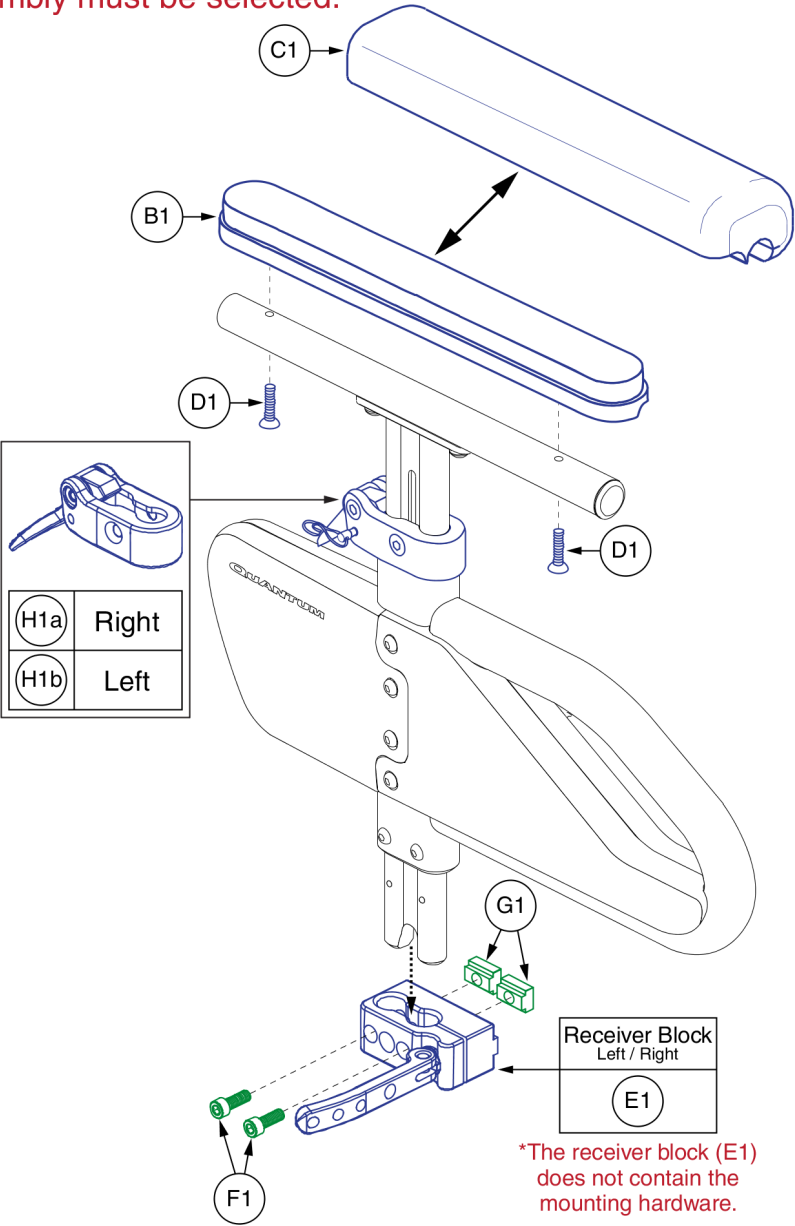
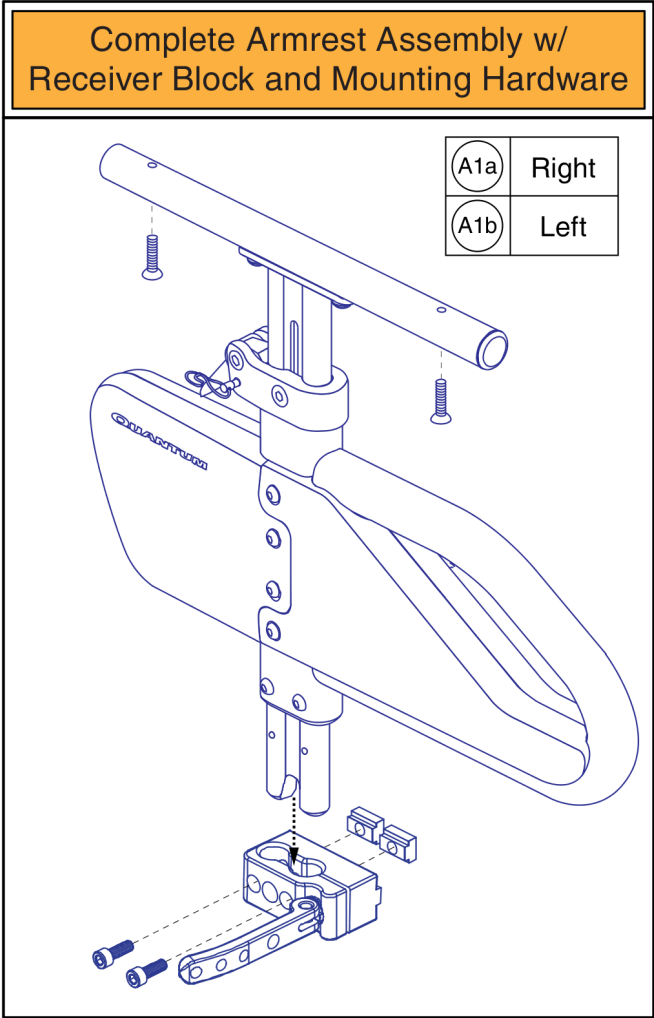




Item	Part No.	Name	Qty
A1a	FRMASMB8593	ARMREST,SINGLE POST HEIGHT ADJUSTABLE,DESK LENGTH,RIGHT	1
A1b	FRMASMB8592	ARMREST,SINGLE POST HEIGHT ADJUSTABLE,DESK LENGTH,LEFT	1
B1	SETLRAM1115	ARMREST,PAD,SHORT,QUANTUM,V2	1
C1	SETLRAM1164	ARMPAD,ASSY,WATERFALL,BLACK,9", DESK LENGTH	1
D1	SCRSHFH1081	SCREW,SHFH,BLACK ZINC,10-32 X 0.75",GRADE 8,W/NYLON PATCH	2
E1	FRMASMB8586	ARMREST,ASSY,RECEIVER BLOCK,QUANTUM SINGLE POST HEIGHT ADJUSTABLE,D-1354-019	1
F1	SCRSHCS1005	SCREW, SHCS,BLACK ZINC,1/4-20 X 0.75"	2
G1	DWR1360A002	T-NUT,1/4-20 X 0.5625",A-1360-002	2
H1a	FRMASMB8831	LEVER,ASSY,MOLDED,QUAD RELEASE,RIGHT	1
H1b	FRMASMB8830	LEVER,ASSY,MOLDED,QUAD RELEASE,LEFT	1

2.3. Quick Height Adjustable Armrests

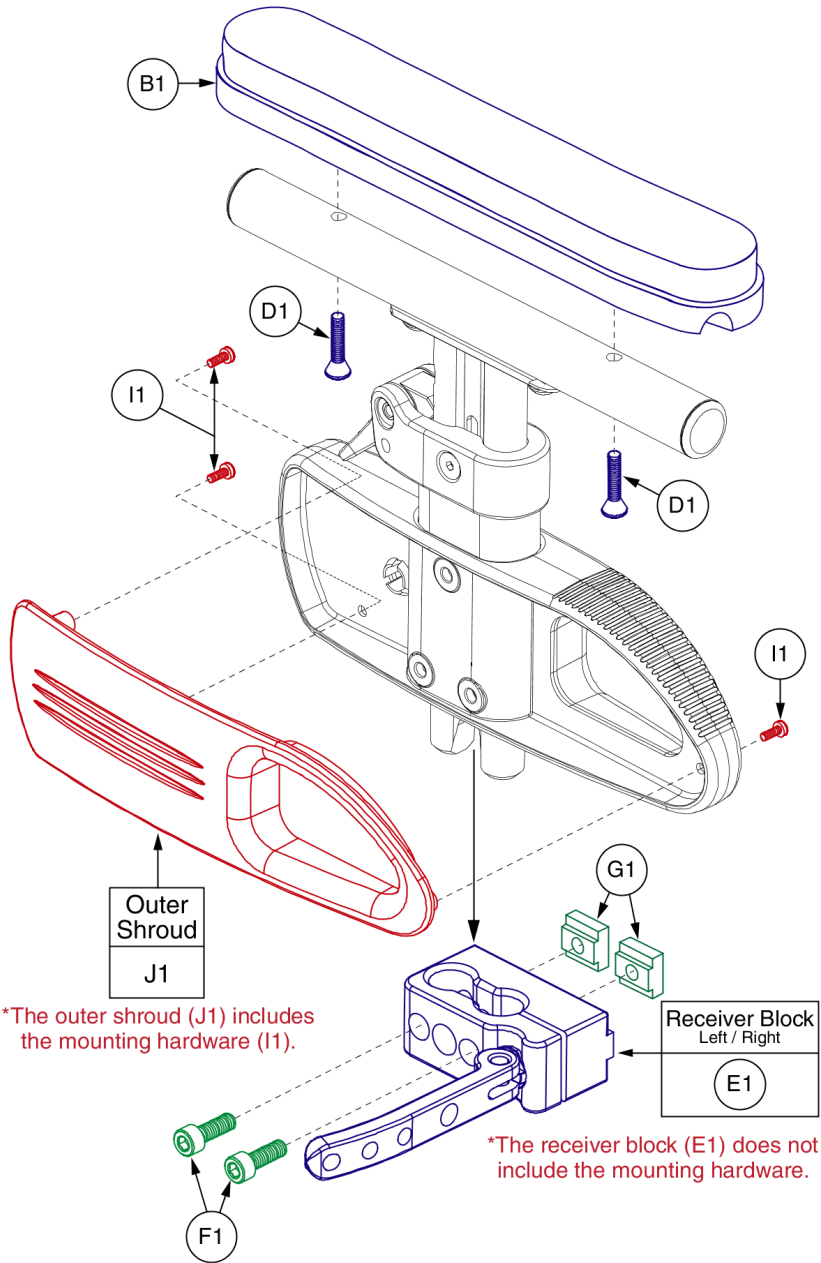
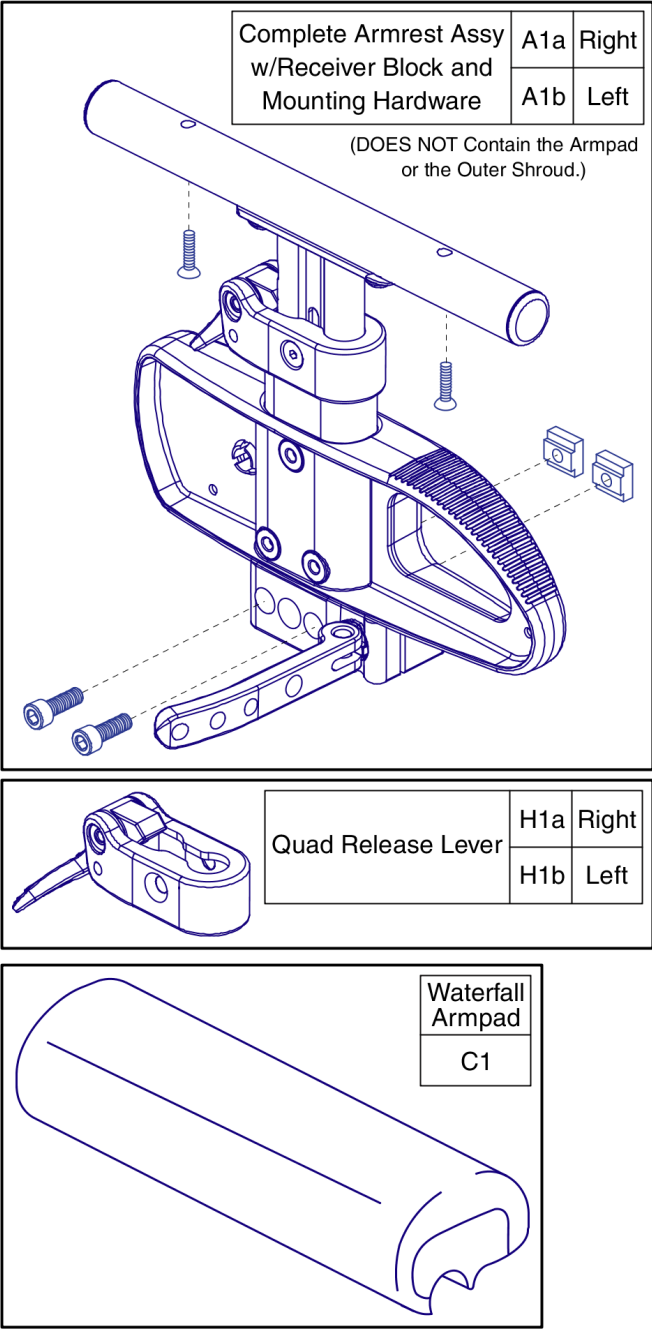
\*Only serviceable components contain callouts. For components without callouts the complete assembly must be selected.\*



Item	Part No.	Name	Qty
A1a	FRMASMB8595	ARMREST,SINGLE POST HEIGHT ADJUSTABLE,FULL LENGTH,RIGHT	1
A1b	FRMASMB8594	ARMREST,SINGLE POST HEIGHT ADJUSTABLE,FULL LENGTH,LEFT	1
B1	SETLRAM1116	ARMREST,PAD,LONG,QUANTUM,V2	1
C1	SETLRAM1165	ARMPAD,ASSY,WATERFALL,BLACK,14", FULL LENGTH	1
D1	SCRSHFH1081	SCREW,SHFH,BLACK ZINC,10-32 X 0.75",GRADE 8,W/NYLON PATCH	2
E1	FRMASMB8586	ARMREST,ASSY,RECEIVER BLOCK,QUANTUM SINGLE POST HEIGHT ADJUSTABLE,D-1354-019	1
F1	SCRSHCS1005	SCREW, SHCS,BLACK ZINC,1/4-20 X 0.75"	2
G1	DWR1360A002	T-NUT,1/4-20 X 0.5625",A-1360-002	2
H1a	FRMASMB8831	LEVER,ASSY,MOLDED,QUAD RELEASE,RIGHT	1
H1b	FRMASMB8830	LEVER,ASSY,MOLDED,QUAD RELEASE,LEFT	1

2.3. Quick Height Adjustable Armrests

\*Only serviceable components contain callouts. For components without callouts the complete assembly must be selected.\*



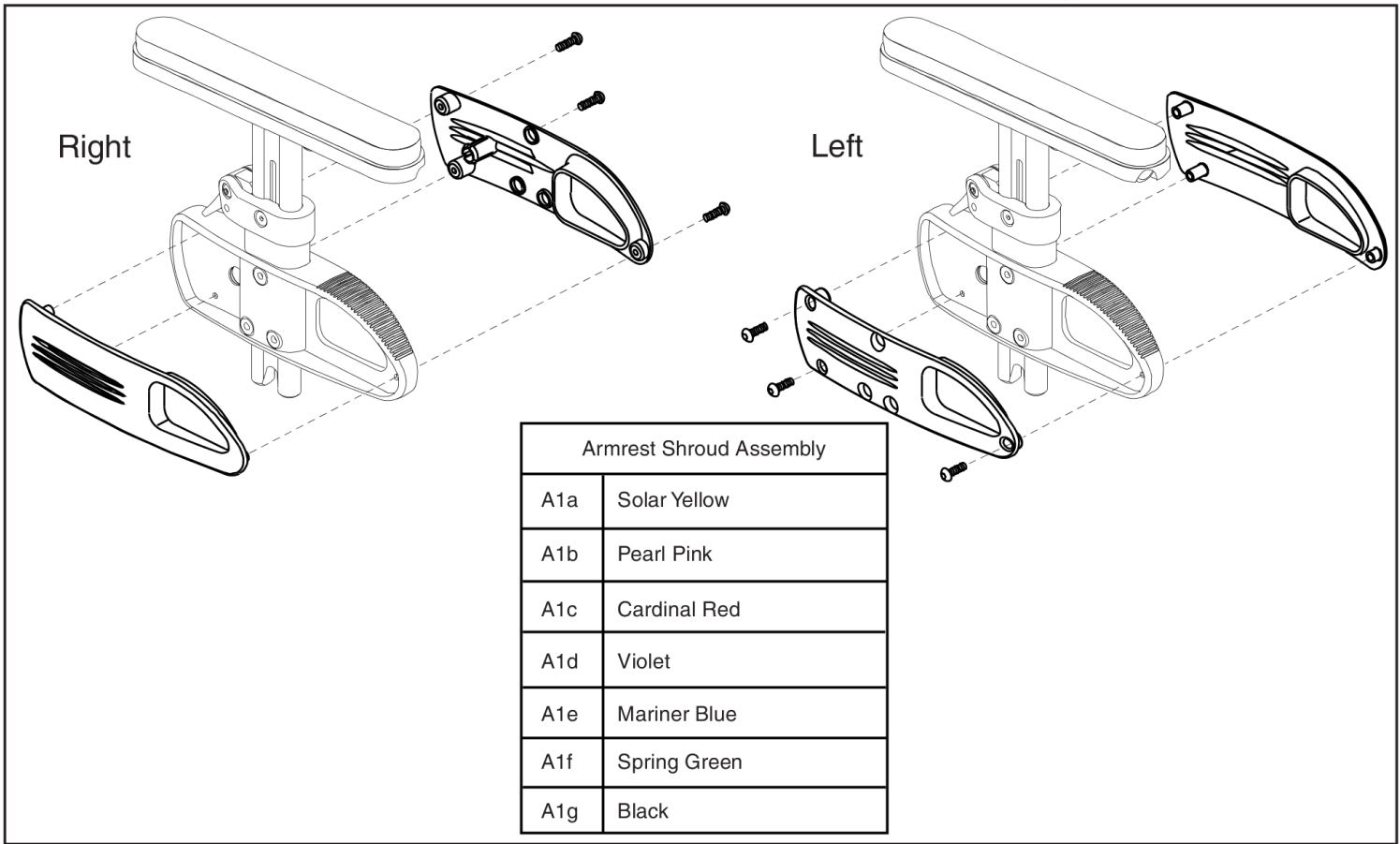




Item	Part No.	Name	Qty
A1a	FRMASMB10609	ARMREST,PEDIATRIC SINGLE POST HEIGHT ADJUSTABLE,RIGHT	1
A1b	FRMASMB10608	ARMREST,PEDIATRIC SINGLE POST HEIGHT ADJUSTABLE,LEFT	1
B1	SETLRAM1115	ARMREST,PAD,SHORT,QUANTUM,V2	1
C1	SETLRAM1164	ARMPAD,ASSY,WATERFALL,BLACK,9", DESK LENGTH	1
D1	SCRSHFH1081	SCREW,SHFH,BLACK ZINC,10-32 X 0.75",GRADE 8,W/NYLON PATCH	2
E1	FRMASMB8586	ARMREST,ASSY,RECEIVER BLOCK,QUANTUM SINGLE POST HEIGHT ADJUSTABLE,D-1354-019	1
F1	SCRSHCS1005	SCREW, SHCS,BLACK ZINC,1/4-20 X 0.75"	2
G1	DWR1360A002	T-NUT,1/4-20 X 0.5625",A-1360-002	2
H1a	FRMASMB8831	LEVER,ASSY,MOLDED,QUAD RELEASE,RIGHT	1
H1b	FRMASMB8830	LEVER,ASSY,MOLDED,QUAD RELEASE,LEFT	1
I1	SCRPPH1031	SCREW, PPH,BLACK ZINC,4-40 X 3/8"	3
J1	SHDASMB5000	SHROUD,ASSY,BLACK,ARMREST INSERT,OUTER	1

2.3. Quick Height Adjustable Armrests

\*\*\* Individual components are not available for replacement. The entire assembly must be purchased. \*\*\*



Item	Part No.	Name	Qty
A1a	SHDASMB5001	SHROUD,ASSY,SOLAR YELLOW,ARMREST INSERT,OUTER,QUANTUM PEDIATRIC SINGLE POST HEIGHT ADJUSTABLE	1
A1b	SHDASMB5002	SHROUD,ASSY,PEARL PINK,ARMREST INSERT,OUTER,QUANTUM PEDIATRIC SINGLE POST HEIGHT ADJUSTABLE	1
A1c	SHDASMB5003	SHROUD,ASSY,CARDINAL RED,ARMREST INSERT,OUTER,QUANTUM PEDIATRIC SINGLE POST HEIGHT ADJUSTABLE	1
A1d	SHDASMB5004	SHROUD,ASSY,VIOLET,ARMREST INSERT,OUTER,QUANTUM PEDIATRIC SINGLE POST HEIGHT ADJUSTABLE	1
A1e	SHDASMB5005	SHROUD,ASSY,MARINER BLUE,ARMREST INSERT,OUTER,QUANTUM PEDIATRIC SINGLE POST HEIGHT ADJUSTABLE	1
A1f	SHDASMB5006	SHROUD,ASSY,SPRING GREEN,ARMREST INSERT,OUTER,QUANTUM PEDIATRIC SINGLE POST HEIGHT ADJUSTABLE	1
A1g	SHDASMB5000	SHROUD,ASSY,BLACK,ARMREST INSERT,OUTER	1

Appendix A:Pages Index

Desk Length, Single Post, Height Adjustable Armrest, Synergy/TB2 . . . .	1
Full Length, Single Post, Height Adjustable Armrest, Synergy/TB2 . . . .	3
Pediatric Quick Release (Single Post) L&R, Synergy & TB2 . . . . .	5
Pediatric Quick Release (Single Post) Shroud . . . . .	7

## Appendix B:Parts Index

DWR1360A002	2, 4, 6
FRMASMB10608	6
FRMASMB10609	6
FRMASMB8586	2, 4, 6
FRMASMB8592	2
FRMASMB8593	2
FRMASMB8594	4
FRMASMB8595	4
FRMASMB8830	2, 4, 6
FRMASMB8831	2, 4, 6
SCRPPH1031	6
SCRSHCS1005	2, 4, 6
SCRSHFH1081	2, 4, 6
SETLRAM1115	2, 6
SETLRAM1116	4
SETLRAM1164	2, 6
SETLRAM1165	4
SHDASMB5000	6, 8
SHDASMB5001	8
SHDASMB5002	8
SHDASMB5003	8
SHDASMB5004	8
SHDASMB5005	8
SHDASMB5006	8

# Illustrated Parts Breakdown

## **USA - Quantum Rehab**

401 York Avenue  
Duryea, Pa 18642  
[www.quantumrehab.com](http://www.quantumrehab.com)

## **USA - Pride Mobility Products Corp.**

182 Susquehanna Avenue  
Exeter, Pa 18643  
[www.pridemobility.com](http://www.pridemobility.com)

## **Canada**

5096 South Service Road  
Beamsville, Ontario L0R 1B3  
[www.pridemobility.ca](http://www.pridemobility.ca)  
[www.quantumrehab.com](http://www.quantumrehab.com)

## **Australia**

20-24 Apollo Drive  
Hallam, Victoria 3803  
[www.pridemobility.com.au](http://www.pridemobility.com.au)  
[www.quantumrehab.com.au](http://www.quantumrehab.com.au)

## **New Zealand**

38 Lansford Crescent  
Avondale, Auckland 0600  
[www.pridemobility.co.nz](http://www.pridemobility.co.nz)

## **UK**

32 Wedgwood Road  
Bicester, Oxfordshire OX26 4UL  
[www.pride-mobility.co.uk](http://www.pride-mobility.co.uk)  
[www.quantumrehab.co.uk](http://www.quantumrehab.co.uk)

## **Netherlands**

**(Authorised EU Representative)**

De Zwaan 3  
1601 MS Enkhuizen  
[www.pridemobility.eu](http://www.pridemobility.eu)  
[www.quantumrehab.eu](http://www.quantumrehab.eu)

## **Italy**

Via del Progresso, ang. Via del Lavoro  
Loc. Prato della Corte  
00065 Fiano Romano (RM)  
[www.pride-italia.it](http://www.pride-italia.it)  
[www.quantumrehab-italia.it](http://www.quantumrehab-italia.it)

## **France**

26 Rue Monseigneur Ancel  
69800 Saint-Priest  
[www.pridemobility.fr](http://www.pridemobility.fr)  
[www.quantumrehab.fr](http://www.quantumrehab.fr)

## **Spain**

Calle Las Minas Número 67  
Polígono Industrial Urtinsa II, de Alcorcón  
28923 Madrid

## **Germany**

Hövelrieger Str. 28  
33161 Hövelhof  
[www.pridemobility.de](http://www.pridemobility.de)

## **China**

Room 508, Building #4  
TianNa Business Zone  
No. 500 Jianyun Road  
Pudong New Area  
Shanghai 201318